

Boreal Woodland Caribou Management

Presentation to the

Canadian Institute of Forestry

Boreal Woodland

Caribou Management

Prince Albert September 27, 2011

Roger G. Nездoly RPF, Mistik Management Ltd.





Boreal Woodland Caribou Management

-Presentation

- Caribou Habitat Mitigation Plan embedded in 20-Yr FMP (VII-Appendix H)
- Validation Work (Yr 2 of 3) re Predictive Habitat Models
- Closing Thoughts

Boreal Woodland Caribou Management

Caribou Habitat Mitigation Plan

- ID Provincial & National protected areas in or near FMA
- ID high-quality BC habitat in FMA
- Maintain spatial database of past & present sightings

Boreal Woodland Caribou Management

Caribou Habitat Mitigation

- Establish measurable targets for 2007-17 re minimizing forestry impacts within landscape-level boreal caribou ranges
- ID & maintain landscape connectivity within & between BC ranges

Boreal Woodland Caribou Management

Caribou Habitat Mitigation Plan

- Long-term landscape level forest use planning
- ID & implement 'least impact' forestry activities when in boreal caribou ranges

Boreal Woodland Caribou Management

Caribou Habitat Mitigation Plan

- Continue contribution to provincial recovery strategy
- Periodic review & endorsement by wildlife experts (e.g. this plan had 3 external reviewers)

Boreal Woodland Caribou Management

Caribou Habitat Mitigation Plan

- Winter operations
- In & out quick
- Access control (reclaim, etc.)
- Limits re area extent within BC ranges

Boreal Woodland Caribou Management

Caribou Habitat Mitigation Plan

-Targets (4) Within 10 Yr Period

1-Not cause combined BC intact ranges to decrease more than 5%

2-Not cause contiguous, high quality habitat to decrease more than 3%

Boreal Woodland Caribou Management

Caribou Habitat Mitigation Plan

3-Total area harvested will not exceed 3% of total for all BC ranges combined

4-Total permanent (not reclaimed) road density will not exceed 0.2 km/km² for all BC ranges combined

Boreal Woodland Caribou Management

Predictive Habitat Model Validation

- Resulting from minor nonconformance re FSC certification
- Alpha Wildlife
- Year 2 of 3 completed

Boreal Woodland Caribou Management

Predictive Habitat Model Validation

- High quality habitat
- Winter (February)
- Transect recon (snowshoe)
- Data – tracks, pellets

Boreal Woodland Caribou Management

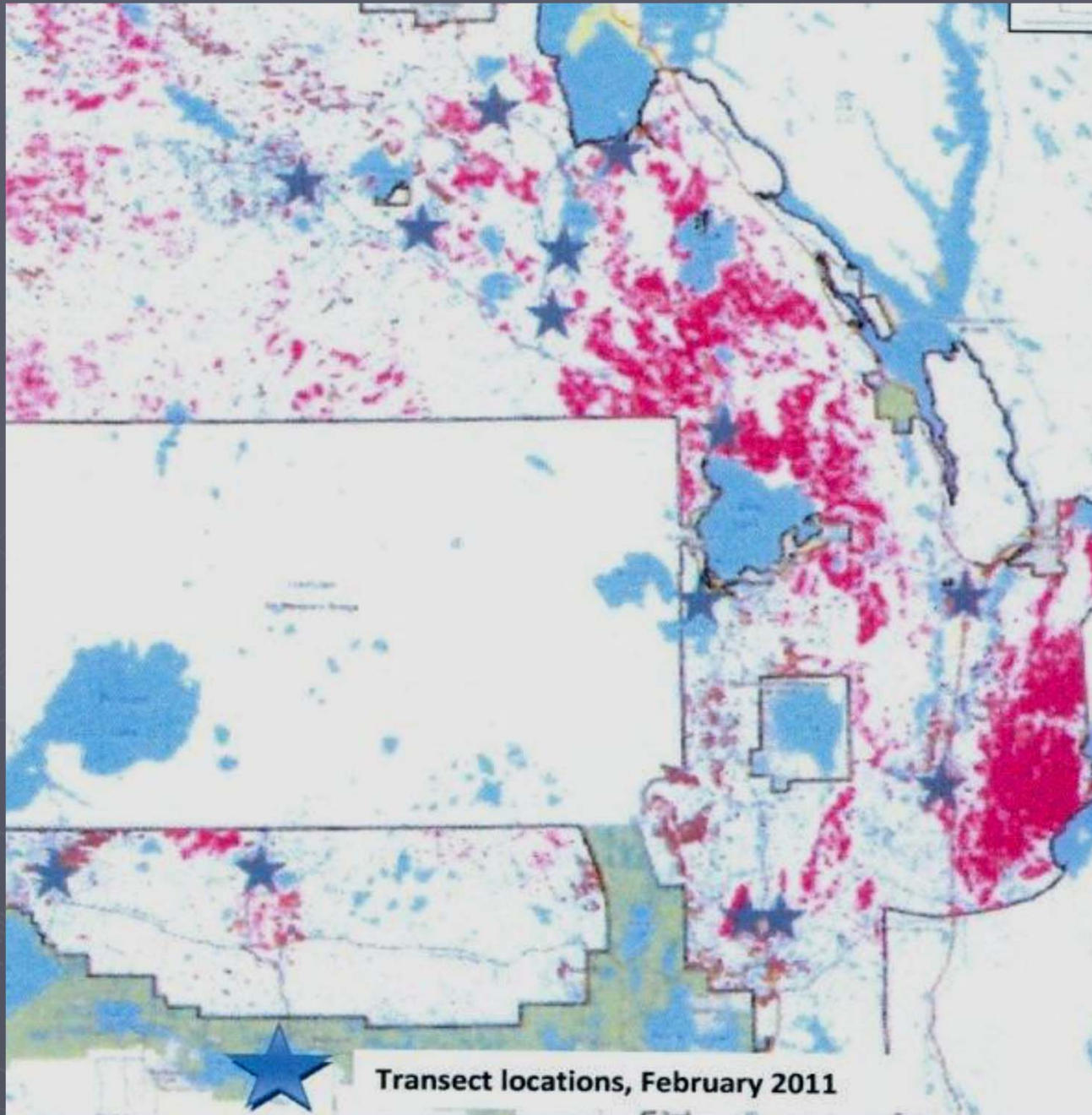
Predictive Habitat Model Validation

- February 2011
- 15 transects (20,000 + meters)
- Caribou n=46
- 35 in suitable polygons
- 11 in unsuitable polygons
- 35% of tracks in upland forest types

Boreal Woodland Caribou Management

Predictive Habitat Model Validation

- High degree of correlation between expected & observed
- Scary – boreal caribou evidenced on 10 of 14 transects
- Boreal caribou evidence on several 'Control' transects



Transect locations, February 2011

Boreal Woodland Caribou Management

Closing Thoughts

- Boreal caribou were found:
- Small, isolated high quality habitat area(s)
- Areas with 'high' human activity (forestry, oil & gas, traffic @ commercial fishing)

Boreal Woodland Caribou Management

Closing Thoughts

- Boreal caribou Questions(?)
- Is Resilience greater to 'factors?'
- Greater Areal Dispersion
- Population Estimates (low?)

Boreal Woodland Caribou Management

Closing Thoughts

In Saskatchewan we
do not want!

Boreal Woodland Caribou Management

Ontario moves to reduce harvestable timber levels in Abitibi River Forest for caribou conservation

September 9th, 2011 | Posted in [Woodlands](#) | [No comments »](#)

Ontario has released its management plan for the Abitibi River Forest in Northeastern Ontario. **The plan would see an immediate 25% reduction in harvestable timber, with a 65% reduction in less than 30 years.**

The reduction is due to new caribou conservation policies.

Reaction to the new harvestable levels was shift, and negative.

Cochrane Mayor Peter Politis said if this plan goes through, the impact on the forest industry in the region will be "catastrophic."

Iroquois Falls Mayor Gilles Forget is concerned that these new harvesting limits will discourage forestry companies from starting up or expanding a mills within the region. Forget pointed to the AbitibiBowater announcement two weeks ago that the company is spending up to \$17 million to upgrade its mill in Iroquois Falls.

"They would definitely be discouraged from making any further investment in our community or anywhere else in Northeastern Ontario," he said

Boreal Woodland Caribou Management

Questions &/or Comments

Thanks to the CIF
Sask. Section for this
opportunity.