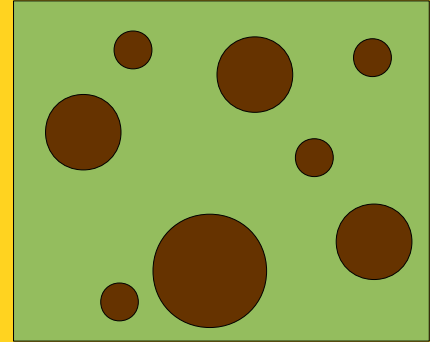


# Measuring Basal Area with a Wedge Prism

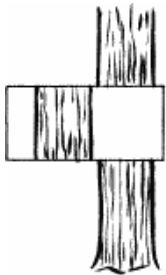
**Basal Area (BA)**, measured in  $m^2/ha$ , is the area of a given piece of land that is occupied with the cross section of tree trunks. It is a measure of how much wood is in a forest.



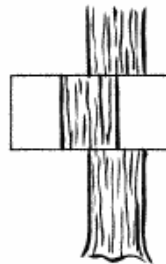
Cross-section of tree trunks from above



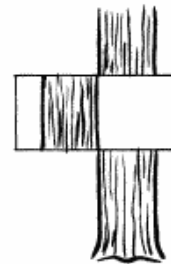
- 1) Mark a spot on the ground and keep the prism over that spot – move yourself around the prism.
- 2) Hold the prism at arms length.
- 3) Move in a complete circle around the prism, looking at every tree through the prism. Count all the trees that are “in” and every second tree that is “borderline.”
- 4) Multiply the count by the factor of your prism.



Out – do not count



In - count



Borderline – count every 2<sup>nd</sup> tree

