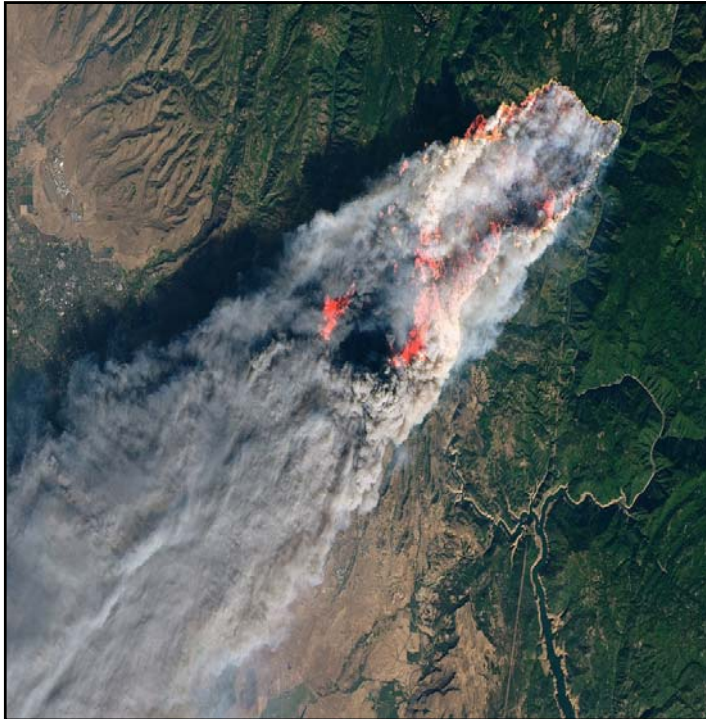




PEGASUS IMAGERY LTD

Canadian Institute of Forestry
17 April 2019

Confidential & Proprietary. Copyright © Pegasus Imagery Ltd. All Rights Reserved.



Challenges:

- Fort MacMurray (2016): **\$10b+**
- Alberta in 2017: **\$1.5b**
- British Columbia in 2017: **\$567m**
- Pine Beetle losses (1999+) **19m** ha

Opportunities:

- 47,000 Albertans employed
- \$11b Economic activity





Logging Truck Costs

Occupation Group	Lost-time Claims	Disabling Injury Claims	Employment
Transportation Equipment Operators and Related Workers, Excluding Labourers	39.3%	40.0%	3.5%
Occupations Unique to Forestry Operations, Mining, Oil and Gas Extraction, and Fishing, excluding labourers	11.1%	9.7%	40.9%
Heavy Equipment and Crane Operators Including Drillers	10.3%	9.7%	1.9%
Mechanics	10.3%	9.0%	8.6%
Primary Production Labourers	7.7%	7.6%	6.2%
Technical Occupations Related to Natural and Applied Sciences	0.9%	1.4%	9.6%
All Other Occupations	20.5%	22.8%	29.3%

Data Source: WCB Data, Prepared by Data Development and Evaluation; Statistics Canada, Labour Force Survey (Microdata Files)

Logging and Woodlands Operations, including Trucking of Logs — Alberta: 2009-2010

	2009	2010	% Change
Person-years worked	3,666	3,864	5.4%
Lost-time claims	76	99	30.3%
Lost-time claim rate	2.07	2.56	23.6%
Modified-work claims	36	53	47.2%
Lost-time claims involving modified work	19	31	63.2%
Disabling injury claims	93	121	30.1%
Disabling injury rate	2.54	3.13	23.4%
Days-lost (LTC)	3,497	4,774	36.5%
Transaction claim costs (LTC)	\$1,198,083	\$1,504,053	25.5%

Data Source: WCB Data, Prepared by Data Development and Evaluation



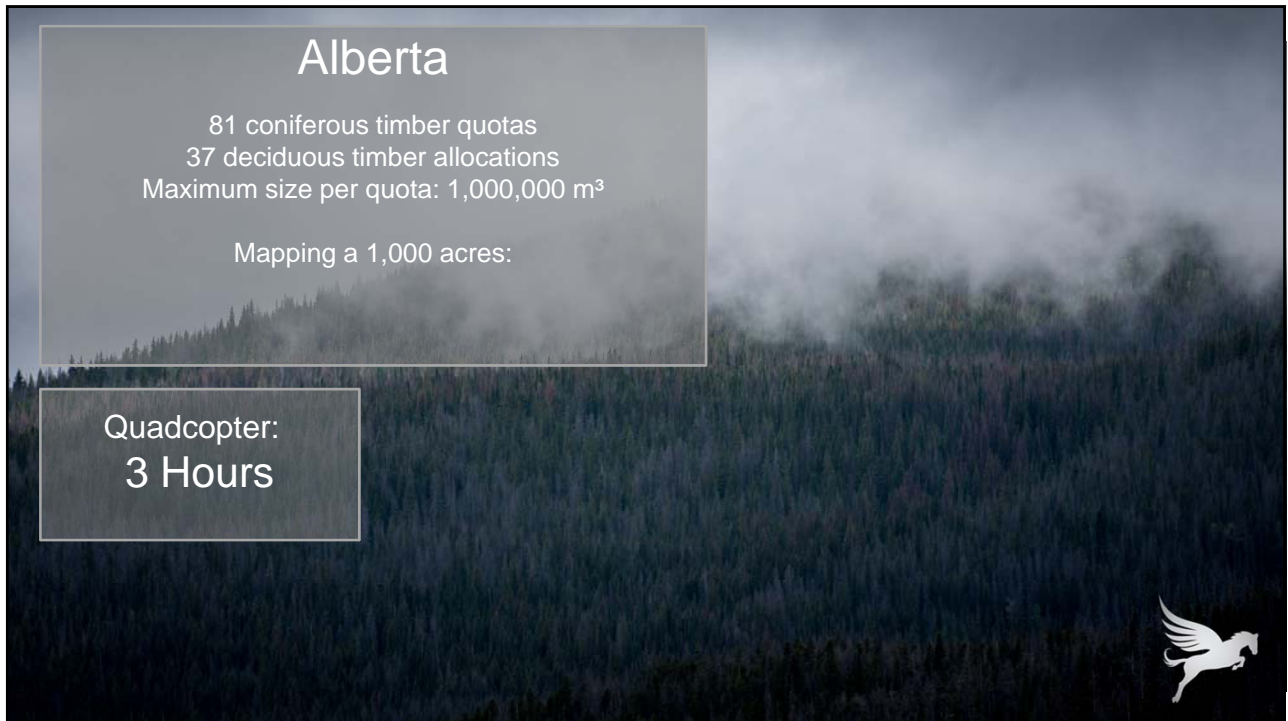


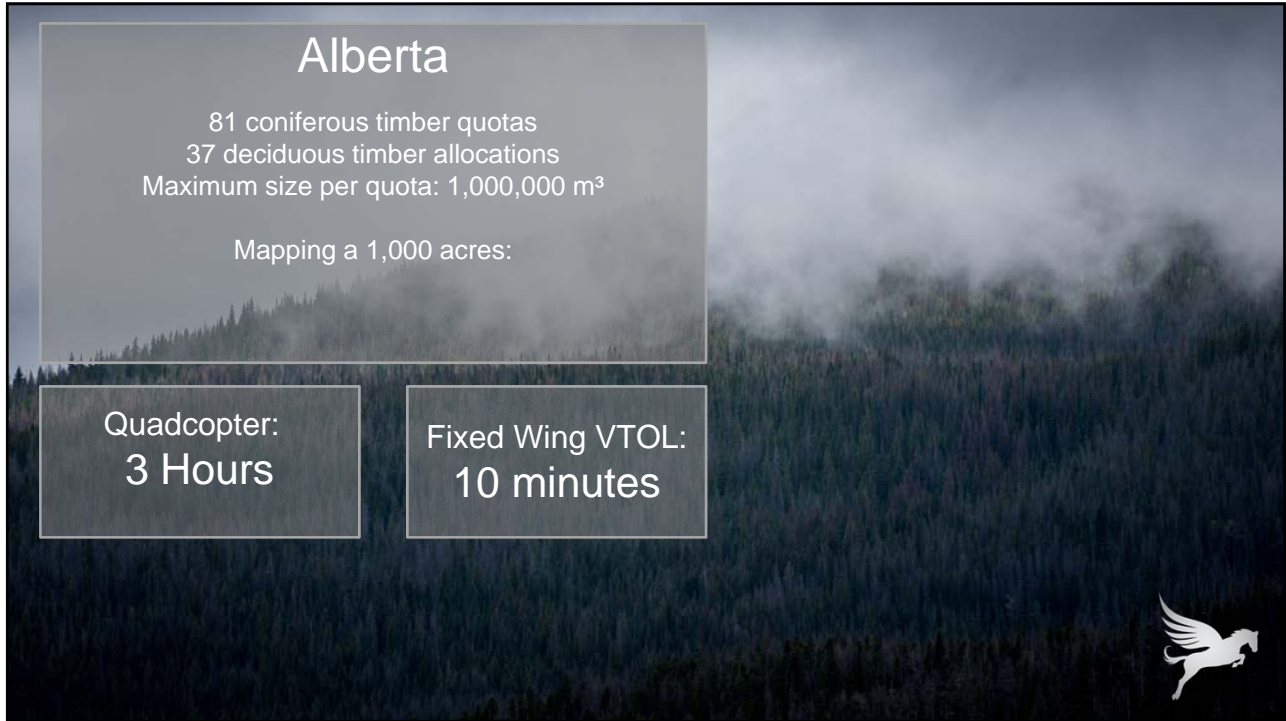
Alberta

81 coniferous timber quotas
37 deciduous timber allocations
Maximum size per quota: 1,000,000 m³

Mapping a 1,000 acres:

Quadcopter:
3 Hours






Alberta

81 coniferous timber quotas
37 deciduous timber allocations
Maximum size per quota: 1,000,000 m³

Mapping a 1,000 acres:

Quadcopter:
3 Hours

Fixed Wing VTOL:
10 minutes



Our Solution

400km Range

4 Hour Endurance

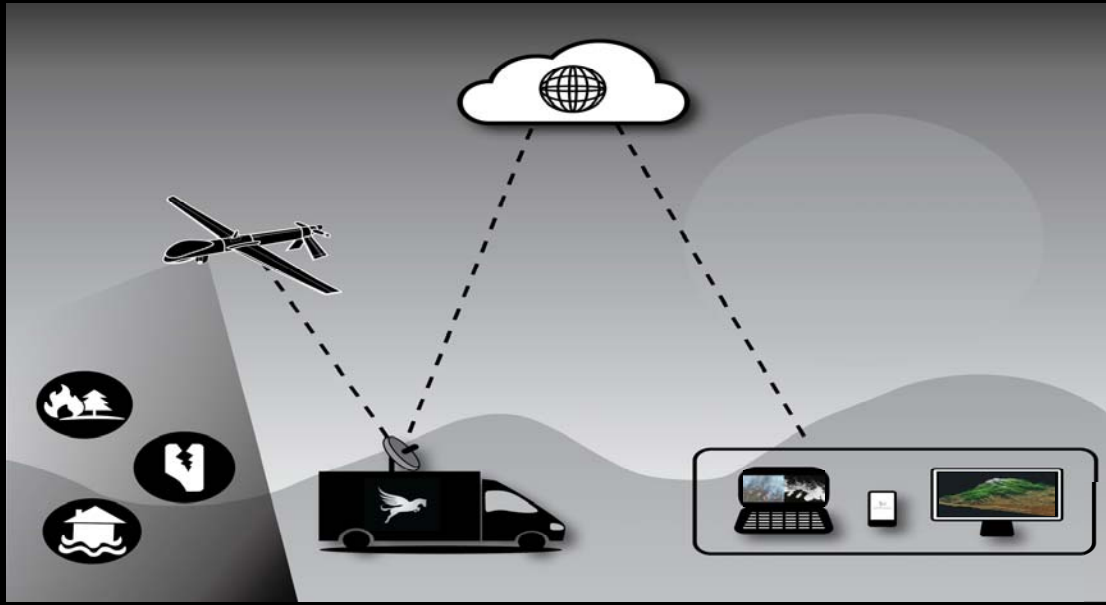
Automatic Takeoff/Landing

Live Data Connection

Military Grade Sensors



Live - Connected - Persistent



PEGASUS IMAGERY
LTD

"Intelligence into Opportunities"

www.pegasusimagery.ca

info@pegasusimagery.ca

Confidential & Proprietary. Copyright © Pegasus Imagery Ltd. All Rights Reserved.