



# Some Collaborative Planning and Consultation Approaches for Forestry and Indigenous Communities

By: Matthew Munson, B.Sc. EASC  
(o/a) Assert A.C.S

For: CIF Technical Workshop

Date: November 14, 2019

Email: [mmunson@assert-ac.s.ca](mailto:mmunson@assert-ac.s.ca)

# BACKGROUND:

## The Numbered Treaties



### Treaty Medal – Indian Chiefs Medal

courtesy Library and Archives Canada, 1986-79-

1638/WikimediaCC (Accessed: Nov 3, 2019; Available:

<https://www.thecanadianencyclopedia.ca/en/article/treaty-8>)

# BACKGROUND:

## The Constitution Act, 1982



### Proclamation of the Constitution Act, 1982

signed by Queen Elizabeth II, in Ottawa on 17 April 1982.

(Accessed: Nov 3, 2019; Available:

<https://thediscoverblog.files.wordpress.com/2017/04/e008125379-v8.jpg>)

# **BACKGROUND:**

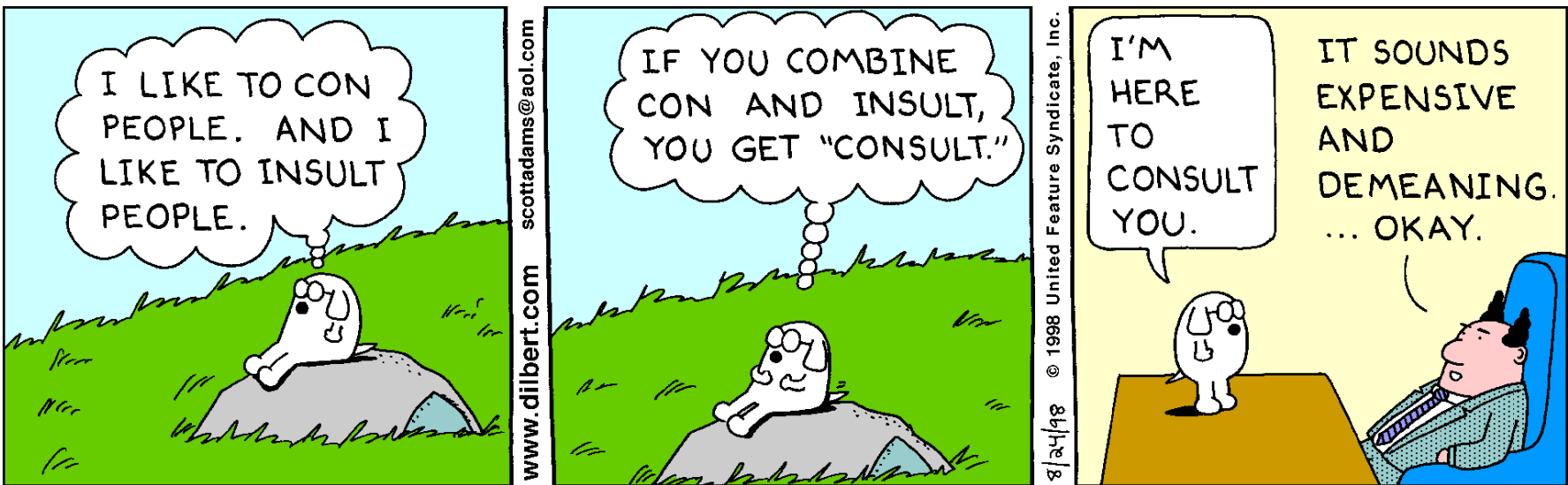
## **The Constitution Act, 1982 – Section 35**

**35. (1) The existing aboriginal and treaty rights of the aboriginal peoples of Canada are hereby recognized and affirmed.**

**(2) In this Act, “aboriginal peoples of Canada” includes the Indian, Inuit and Métis peoples of Canada.**

# CONSULTATION:

## A Slightly Pessimistic View?



\* DILBERT © Scott Adams. Used By permission of ANDREWS MCMEEL SYNDICATION. All rights reserved.

# CONSULTATION:

## Some 'Allies' of the 'Spirit and Intent' of Treaty, Relationships and Collaboration

- **Honesty**
- **Integrity**
- **Credibility**
- **Good-faith**
- **Understanding**
- **Partnership**
- **Reciprocity**
- **Respect**
- **Sharing**
- **Livelihood**



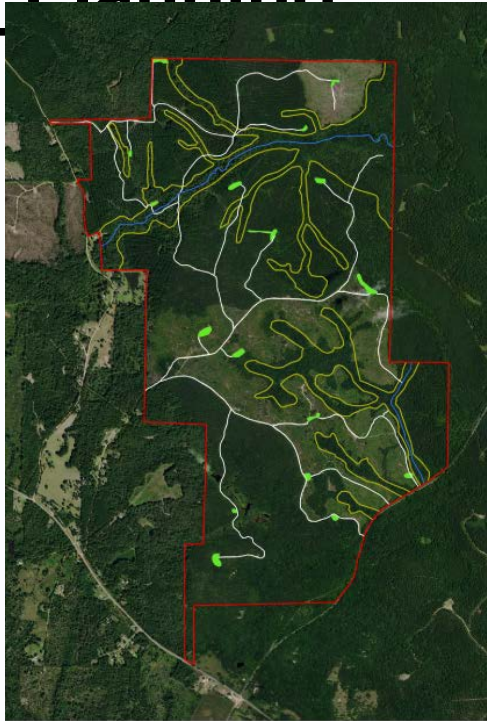
# CONSULTATION:

## A Consultation Secret

Early Engagement and



More Planning



More time for mutual understanding, sharing, co-creating scenarios and jointly developing meaningful relationships and outcomes  
Less Consultation needed at the '11<sup>th</sup> hour' about unmitigated impacts, outstanding concerns, large-scale issues

# PLANNING:

## Approaches to Planning with Communities

1. Draft preliminary plans
2. Predict some potential project effects
3. Present draft plans and potential project effects to communities, incl. what has/hasn't worked in past.
4. Identify communities and individuals most likely to be potentially adversely affected by project effects
5. Identify traditional use activities and values
  - Community meetings
  - Focus/working groups
  - Mapping / spatial-viewer interviews



# PLANNING:

## Approaches to Planning with Communities

5. Incorporate traditional activities and values into preliminary plans
6. Assess potential adverse affects and develop preliminary strategies to:
  - Avoid;
  - Mitigate;
  - Reduce;
  - Offset;
  - Accommodate

# PLANNING:

## Approaches to Planning with Communities

7. Meaningfully discuss preliminary strategies with community, incorporate feedback and develop plans to implement agreed upon strategies
8. Discuss and track all values and concerns – some might be larger than the project or application, but these are meaningful
9. Develop recommendations for large-scope issues (i.e.: policy, guidelines, CCB)

# PLANNING:

## Approaches to Planning with Communities

10. Flag and develop recommendations for large-scope issues (i.e.: policy, guidelines, OGR's, directives/regulation/legislation)
11. Decide which large-scope issues can be developed into bi-lateral commitments
12. Develop list of common large-scope issues that can be collaboratively raised externally with multi-stakeholders

# OUTCOMES:

## Examples of Meaningful Outcomes and Collaborations and Partnerships

- RFMA/Band Member Trapline - avoidance & mitigation plans
- Explore values, causal relationships, and connectivity over space/time; on the spectrum between:
  - *'anywhere / everywhere / anytime / all-the-time,*
  - **[AND]**
  - *'right here / right now'*

# OUTCOMES:

## Examples of Meaningful Outcomes and Collaborations and Partnerships

- Approval Conditions (i.e. contingencies for newly identified TK values within a GDP)
- Co-create partnerships to explore and pursue zonation approaches/long-term models/SHS
  - Community Management Zones (CMZ)
  - Special Management Zones (SMZ) (i.e.: habitat of concern / RFMA area)
  - No-Harvest Zones (NHZ) (i.e.: cabins, camps, trapline trails; HRVc4;

# OUTCOMES:

## Examples of Meaningful Outcomes and Collaborations and Partnerships

- Collaboration tables with NGO's/FN/Gov
- Traditional Knowledge studies for forest management, caribou range and informing TK into WS
- Grant application and project partnerships
  - Indigenous Guardians – Tier 1
  - Community-nominated Priority Places
  - Caribou Range Linear Disturb. Assessment
  - Caribou population recovery and habitat

# -END OF PRESENTATION- Some Collaborative Planning and Consultation Approaches for Forestry and Indigenous Communities

By: Matthew Munson, B.Sc. EASC  
(o/a) Assert A.C.S

For: CIF Technical Workshop

Date: November 14, 2019

Email: [mmunson@assert-ac.s.ca](mailto:mmunson@assert-ac.s.ca)

